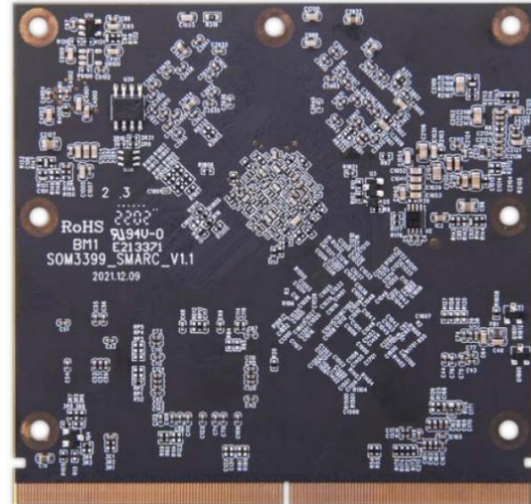
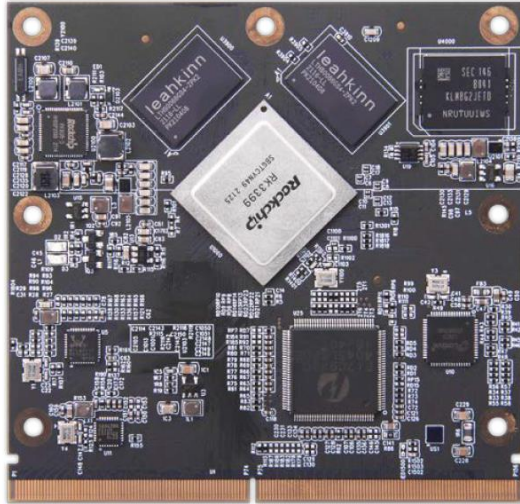


GSMARC-K3399

Full Size RK3399 High Performance SMARC Module



Main Features

- **2 Ethernet 10/100/1000 (Gbit)**
- **PCIe Bridge**
- **Android 10 & Linux Debian 10**

OS

Android 10.0
 Linux (Debian10.0)

Processor

CPU Rockchip RK3399
 Dual-core Cortex-A72 up to 1.8GHz
 Quad-core Cortex-A53 up to 1.4GHz
 GPU Mali-T864 GPU

Memory

LPDDR4 2GB (4GB Optional)
 eMMC FLASH 16GB (32/64GB optional)

Ethernet

2 x GIGABIT Ethernet

PCIe 1 x PCIe 2.1(x4) or 2 x PCIe 2.1(x4 and x1).

USB x 4

2 x USB2.0 and 2 x USB3.0

MIPI

CSI x2

LVDS x1

(1 x Single Channel 24-bits LVDS by Default) or
 1xDual Channel 24-bits LVDS (Shared with eDP)

I2S x2

HDMI x1

(Up to 4096 x 2160)

eDP x1

DP x1

GPIO x12 (1 x PWM)

WI-FI

SDIO x1

BT

from UART

RS-232 x3

(1 x 4-wire UART, 1 x 2-wire UART, 1 x 2-wire UART/Debug)

SPI x2

I2C x3

POWER

5V/3A

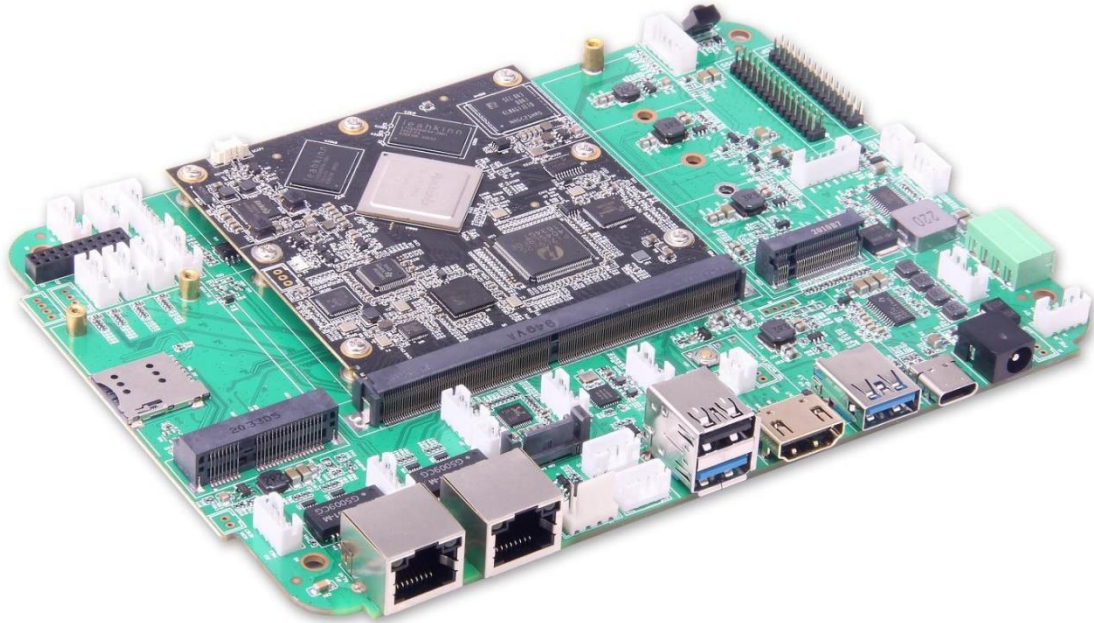
Dimensions

82 x 80 mm

Operating Temperature:

0-60°C (commercial)
 -20/+85°C (extended)

Easy development, Fast Deploy with Carrier board & Dev Kit available for GSMARC-K3399



Rockchip Rk3399

Dual-core Cortex-A72 up to 1.8GHz and Quad-core Cortex-A53 up to 1.4GHz
Mali-T864 GPU, Supports OpenGL ES1.1/2.0/3.0/3.1, OpenVG1.1, OpenCL, DX11

Memory/Storage

2GB LPDDR4 (4G Optional)
16GB (32G/64G Optional)
SD 3.0 (Max 64G)

External Storage

Max 128G

Camera Support

Integrated ISP with support for image sensors up to 13MP

Audio

MP3, AAC, WMA, RM, FLAC, Ogg and programmable with 7.1/5.1 down-mixing

Audio + post-processing
(optional)

Connectivity

WLAN 802.11 a/b/g/n/ac 2.4/5GHz and BT5.0

Ethernet

2x GIGABIT

Display Interface

1 x Single Channel 24-bits LVDS(Default) or 1 x Dual Channel 24-bits LVDS (Shared with eDP)

USB3.0 x 2, USB2.0 x 4

USB Type-C x 1

HDMI Out x 1

1 x PCIe 2.1(x4 and x1)

Two USB 2.0 jack (host mode only)

EDP x 1

CAN x 1

GPIO x 12

SATA x 1

OS-support

Linux Debian 10 & Android10.0

Video

MPEG-1: up to MP:1080p@60fps (1920x1080)

MPEG-2: up to MP:1080p@60fps (1920x1080)

MPEG-4: up to ASP level 5: 1080p@60fps (1920x1080)

GMC (global motion compensation) not supported

H.263: 576p@60fps (720x576)

H.264: up to HP level 5.1: 2160p@24fps (3840x2160)

image cropping not supported

HEVC/H.265/VP9: 4K@60fps (4096x2304)

VC-1: up to AP level 3: 1080p@30fps (1920x1080)

VP8: 1080p@60fps (1920x1080)

MVC: 1080p@60fps (1920x1080)

Power, Mechanical and Environmental

Power: 12V / 2A

Dimensions: 132*182*20 mm

Operating Temp:

commercial (0°C +60 °C)

Extended (-20°C+ 85°C)

RoHS and Reach compliant

Option: 4G Ram /32G eMMC (up to 64 GB on Request)

GSMARC-K3399 -Kit EVA: SMARC Module 2G/16G + Carrier Board